



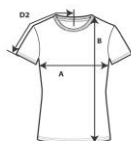
42000L



Performance Ladies' T-Shirt

DETAILS

| | |
|-------------------|---|
| Weight | 170.0 G/SqM (White 161.0 G/SqM) |
| Content | 100% Polyester |
| Features | Semi-fitted contoured silhouette with side seam Wicking properties Anti-microbial properties Snag resistant Seamed single needle 1.3 cms collar Cap sleeves Pad printed neck label and double-satin joker label Twin needle sleeve and bottom hems |
| Sizes | XS-2XL |
| Case Packs | XS - 2XL 36 PIECES |
| Colours | 11 |
| SKU's | 66 |



SPECIFICATIONS

| | Tol- | Tol+ | XS | S | M | L | XL | 2XL |
|---|-------------|-------------|-----------|----------|----------|----------|-----------|------------|
| Centimeters | | | | | | | | |
| Chest (A) | 2.540 | 2.540 | 38.100 | 43.180 | 48.260 | 53.340 | 58.420 | 63.500 |
| Length from HPS (B) | 2.540 | 2.540 | 63.500 | 64.770 | 66.040 | 68.580 | 71.120 | 72.390 |
| Sleeve length (Center back) (D2) | 1.905 | 1.905 | 29.845 | 31.750 | 34.290 | 36.195 | 38.100 | 40.640 |
| Inches | | | | | | | | |
| Chest (A) | 1.000 | 1.000 | 15.000 | 17.000 | 19.000 | 21.000 | 23.000 | 25.000 |
| Length from HPS (B) | 1.000 | 1.000 | 25.000 | 25.500 | 26.000 | 27.000 | 28.000 | 28.500 |
| Sleeve length (Center back) (D2) | 0.750 | 0.750 | 11.750 | 12.500 | 13.500 | 14.250 | 15.000 | 16.000 |

XS-2XL

| COLOURS | Code | Comments |
|----------------|-------------|-----------------------------------|
| Black | 036 | |
| Carolina Blue | 109 | |
| Charcoal | 042 | |
| Navy | 032 | |
| Purple | 081 | |
| Red | 040 | |
| Royal | 051 | |
| Safety Green | 188 | Compliant with ANSI / ISEA 107 |
| Safety Pink | 263 | |
| Sport Grey | 095 | 92% Polyester, 8% Black Polyester |
| White | 030 | |

CHANGES

Total Net Change 0 SKU's